

Sarah Hall, RCA

Artist's Statement

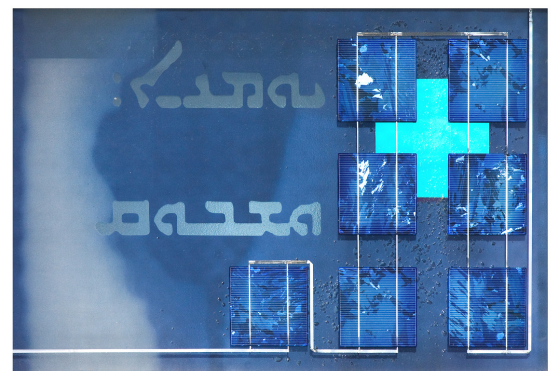
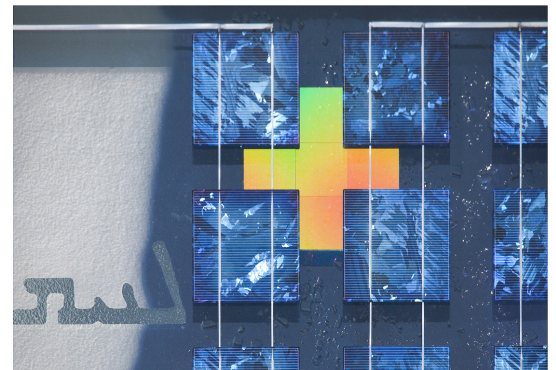
My recent work in architectural glass focuses on the integration of art and solar technology. Energy that is gathered through the solar cells is used to illuminate both the artwork and its surroundings at night. By forging an image with a source of renewable energy, we create a powerful story about how we can live in this world: It gives us a chance to dream about who we can be.

In ancient times, people would erect stelae – stone pillars inscribed with words or images to serve as way-finding markers or to denote a significant event. Those that remain today can teach us about the stories and beliefs of cultures that have preceded our own. I often think about the messages we are leaving for future generations.

My current photovoltaic works can be seen as contemporary stelae: signposts for way-finding, communicating, illuminating – markers of our lives and pathways that possess a deep resonance with the way-finding stelae from ancient times.

Art can open doors, illuminate the possible and forge a connection with the spiritual. There is a point in every design project when all of the separate elements – material, practical, intellectual, artistic and spiritual – coalesce. The design begins to take on a life of its own and exists as a delicate bridge between ideas and feelings, physical thresholds and intuitive dimensions.

Through the medium of architectural glass I am seeking to create works that move beyond window frames and the frame of traditional expectations, to a realm where the worlds of art, architecture, science and environment can meet and exchange ideas, and create a visual reality beyond each of their imaginings.



2009